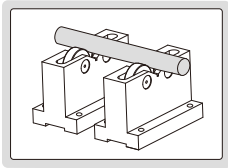
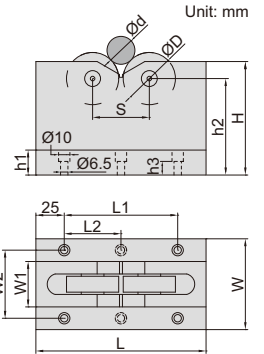


ROLLER BEARING V-BLOCK SETS



6888-1

- Runout accuracy: 5 μ m
- Parallelism of bearings to bottom: 12 μ m
- Two V-blocks per set
- Workpieces don't get damaged due to bearings
- Suitable for heavy workpieces



Code	Size (LxWxH)	Code of bearings	Diameter of bearings ($\varnothing D$)	Range of shafts ($\varnothing d$)	Load capacity
6888-1	150x60x100mm	16004 ZZ	42mm	25-70mm	500kg
6888-2	150x80x100mm	6303 ZZ	47mm	5-55mm	1000kg
6888-3	230x100x150mm	6306 ZZ	72mm	70-200mm	1000kg

Code	W1	W2	h1	h2	h3	L1	L2	S
6888-1	22	44	20	85	12	100	-	60
6888-2	40	60	22	85	12	100	-	50
6888-3	60	80	30	124	20	180	90	120